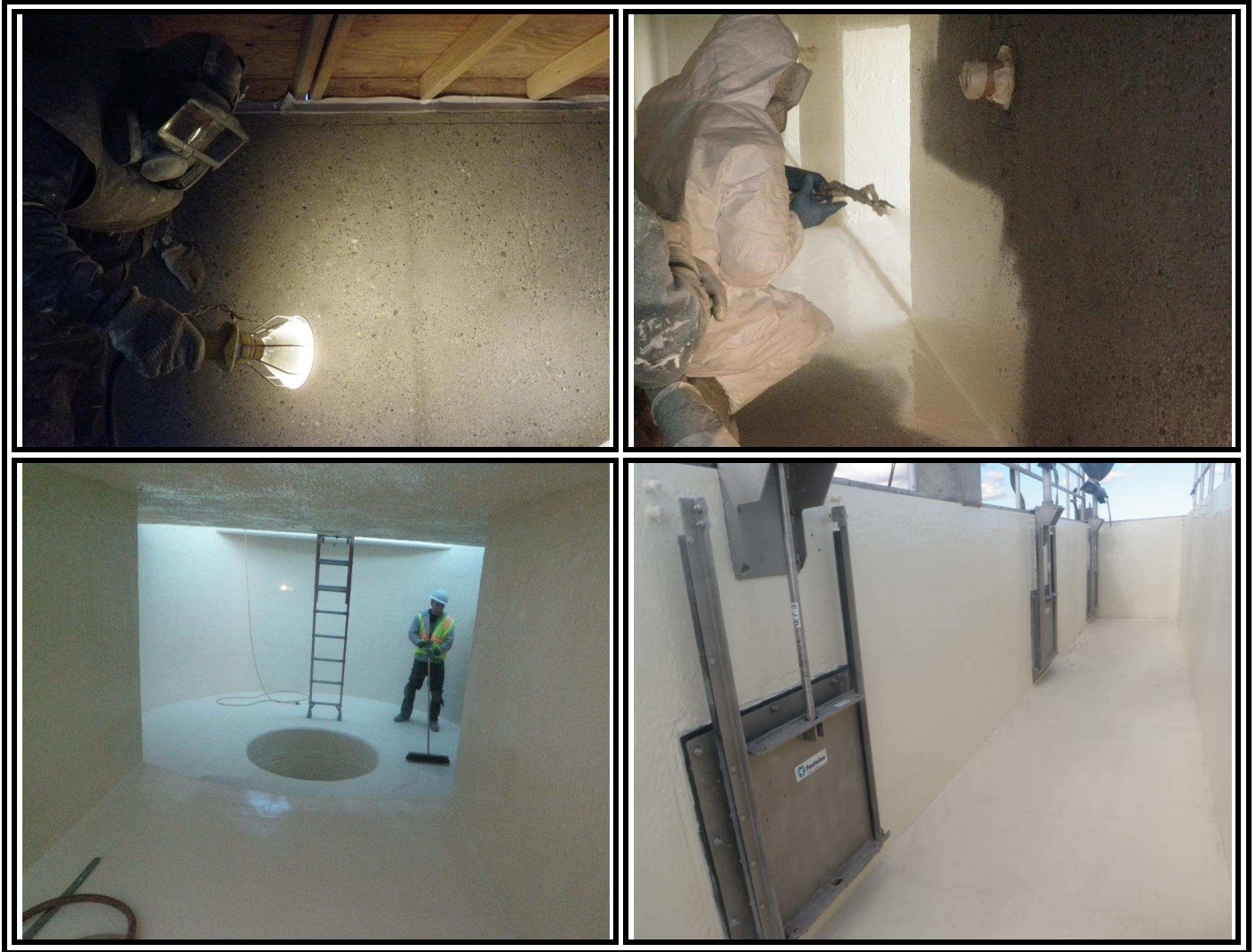


A CASE HISTORY ENDURA-FLEX[®] 1988



IRONHOUSE SANITARY DISTRICT HEADWORKS

Polyurethane Type: Endura-Flex[®] EF-1988,
Expanded Film 100 mils
Solid Film 40 mils

Vessel: New Concrete, 10,000 ft²

Applicator:
Redwood Painting
Contact: Greg Davidson
Phone: 925-432-4500

Date of Application: October, 2010