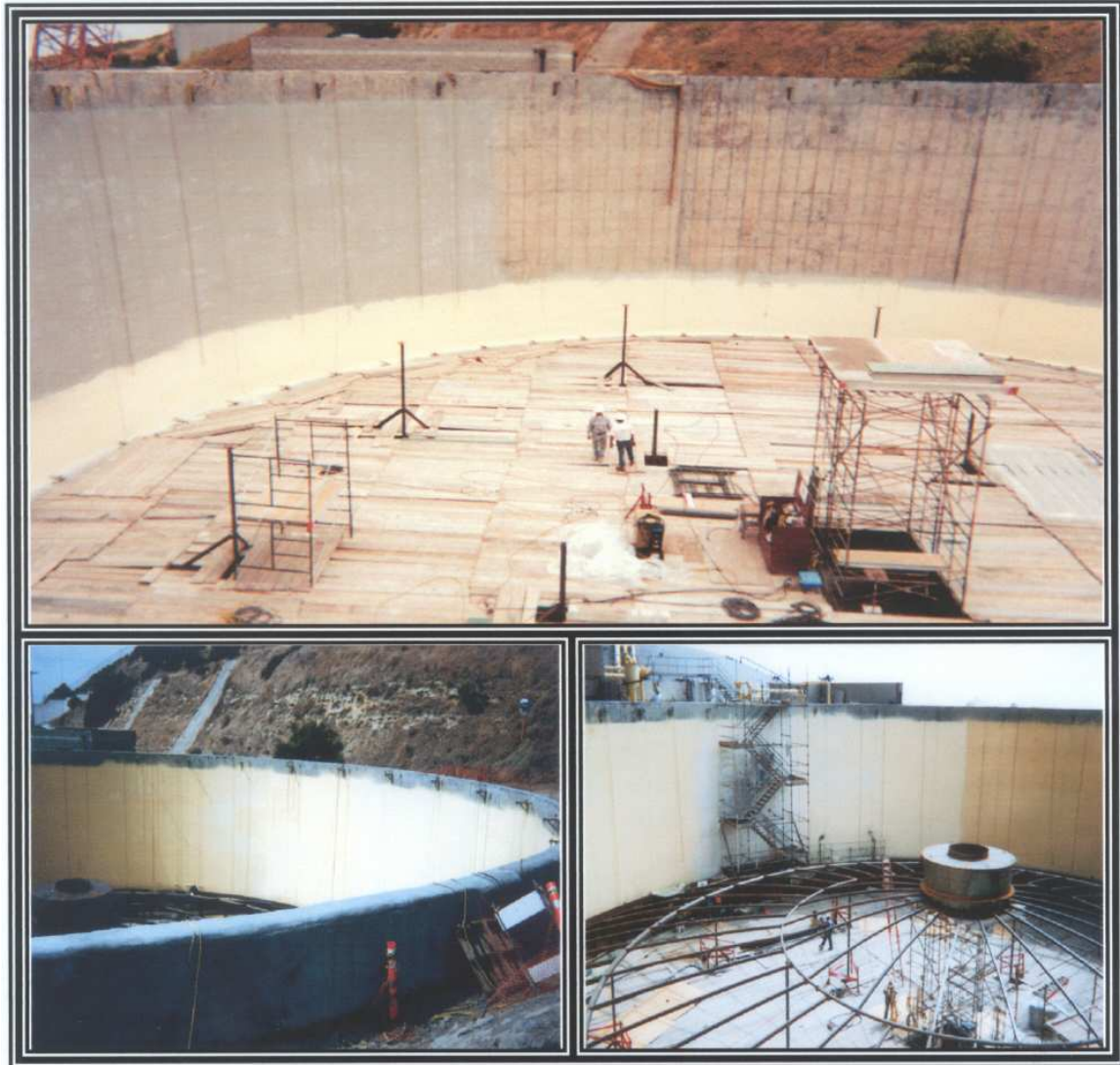


# A CASE HISTORY

## ENDURA-FLEX® 1988



**EAW PROJECT #0495 E.A. WILCOX COMPANY, SO. SAN FRANCISCO  
POINT LOMA WWTP**

**Polyurethane Type:** Elastomeric Endura-Flex® 1988

**Applied to:** Digester N1, Reline internal lining  
ANSI Standard 61 Approved Lining

**Date of Application:** 4/95